



- Nurse Led •

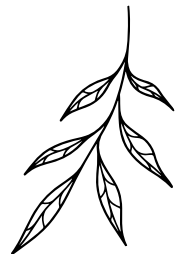
Dermatology Service

Price List



with nurse consultant
Polly Buchannan

Price List





Nurse Led Dermatology Service



Screening Services

Skin Lesion Removal

Chronic Skin Disease Management

Camouflage Service

Price List



Screening Services

What is it?

Our Screening Services provide proactive skin checks to identify unusual or changing moles and skin lesions early to help detect suspicious changes before they progress, enabling timely assessment and intervention.

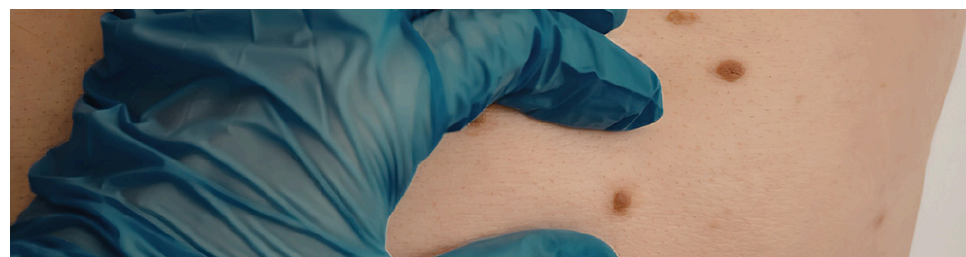
Price

Mole Mapping/Screening ----- £85

Skin Lesion Identification ----- £85

Who is it suitable for?

- Adults and teens who want a proactive skin health check
- Individuals with a history of sun exposure or fair skin
- People with new, changing, or unusual moles/lesions
- Those with a family history of skin cancer or skin cancer risk factors
- Anyone seeking a baseline skin assessment for peace of mind



Skin Lesion Removal



What is it?

Our Skin Lesion Removal service offers non-surgical options to remove or reduce benign and pre-cancerous skin lesions.

Treatments include Cryotherapy (CryoPen) and PDT (Photodynamic Therapy).

PDT (Photodynamic Therapy)

Who is it suitable for?

PDT (Photodynamic Therapy) uses a light activated therapeutic cream combined with a specific light source to destroy abnormal skin cells that can treat:

- Actinic Keratoses (pre-cancerous sun damaged skin)
- Superficial Basal Cell Carcinoma
- Bowens Disease
- Sun Damaged Skin

Price

From £400



Skin Lesion Removal



CryoPen

Who is it suitable for?

CryoPen (cryotherapy) can treat a range of benign lesions including:

Skin Tags | Pigmentation | Seborrheic Keratoses | Cherry Angiomas | Benign Moles | Warts | Granulomas | Actinic Keratoses | Sebaceous Hyperplasia

Price

CryoPen Initial Treatments:

- Up to 3 large lesions (3mm-6mm) - £120
- Up to 6 small lesions (1mm-2mm) - £120
- Additional large lesions ----- £20
- Additional small lesions ----- £10

CryoPen Follow Up Treatments:

- 1 large lesions (3mm-6mm) --- £50
- 1 small lesions (1mm-2mm) --- £40
- Additional large lesion ----- £20
- Additional small lesion ----- £10

Chronic Skin Disease Management



What is it?

Our chronic Skin Disease Management service provides comprehensive care for common long-term skin conditions, including acne, eczema, rosacea and psoriasis. Services include thorough assessment, accurate diagnosis, and personalised treatment planning by a dermatology nurse consultant to manage symptoms, improve skin health and reduce flare-ups over time.

Who is it suitable for?

- Individuals with long-standing conditions who require ongoing monitoring and treatment.
- People experiencing frequent flare-ups of acne, eczema, rosacea or psoriasis.
- Those seeking a coordinated, nurse-led approach with access to diagnostic assessment and treatment planning.
- Patients who benefit from a personalised management plan and regular follow ups to optimise skin health
- Anyone who prefers a structured care pathway that integrates lifestyle guidance, therapies, and review with clinician oversight.

Price	New Patient Consultation - £120
	Follow up consultation ---- £60

NOTE: Prescriptive medications can be obtained privately within the clinic or by your GP if willing.



Camouflage Service



What is it?

Our camouflage service helps assess and plan pigment correction and scar coverage to improve appearance and confidence. The process includes a professional assessment, colour matching, and a tailored camouflage plan to suit individual skin tones and concerns.

Price

Camouflage consultation --- £65

NOTE: Camouflage makeup can be purchased in clinic

Who is it suitable for?

- Individuals with pigmentary concerns (e.g. hyperpigmentation, hypopigmentation) seeking even skin tone
- People with scarring from acne, injury, surgery, or other conditions such as rosacea or vitiligo.
- Those seeking non-invasive cosmetic correction as part of a dermatology care plan.
- Patients wanting professional guidance on camouflage options and long-term maintenance.

